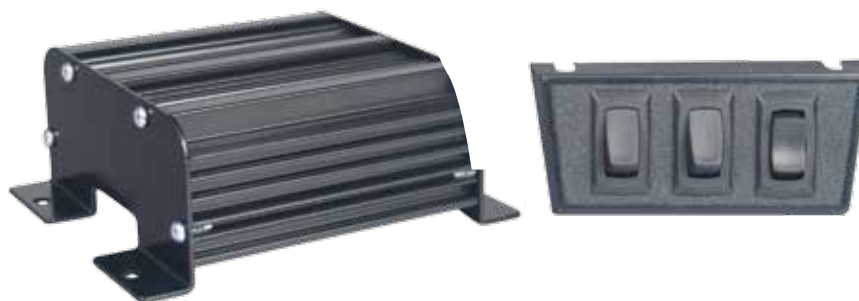


## Features

- > Compact siren has a small size and remote amplifier for tight spaces for undercover vehicles or motorcycles
- > Class D Technology with high speed digital switching provides higher efficiency, less current draw and better reliability
- > Operates a single 100 watt speaker or dual 58 watt speakers
- > 5 popular warning tones (up to 3 tones can be activated): wail, yelp, piercer, hi-lo and super hi-lo, plus 4 additional air horn tones available
- > Horn Ring (hands free operation) controls the tones and can be programmed to rebroadcast warning or air horn tones. When driver presses the vehicle's horn it will activate or de-activate the siren in programmed tone
- > Volume programming capability on public address (PA) and radio rebroadcast sets the volume at a desired level during installation so when the driver selects either option, volume is automatically set
- > Park/kill feature disables the siren when the vehicle is placed in park
- > Built-in protection against over/under voltage, over temperature, short circuit and reverse polarity
- > Hermetically sealed, providing protection in wet areas
- > Includes switch panel with one on/off and two off/momentary switches

# 200Series

## Compact Siren



100 Watt Compact Siren

Molex Connector and Mating Harness

Delphi Connector and Mating Harness

#ETSA200R

#ETSA200RA

#ETSA200RW

## Technical Specifications

WATTS	100 Watts
INPUT VOLTAGE	10-30 Vdc
DIMENSIONS	5.4" (13.7 cm) L x 2.3" (5.8 cm) H x 4.6" (11.6 cm) D
CERTIFICATIONS	Meets or exceeds SAE J1849 and CA Title 13 sound levels when used with SoundOff Signal® speakers
WARRANTY	Two-year

# 200Series

## Compact Siren with PA Function, Remote Amplifier and Remote Switch Panel



Single 100 Watt or Dual 58 Watt Speaker(s) (does not include connector) **#ETSA200R-PA**

Molex (not weatherproof) Connector and Mating Harness **#ETSA200RA-PA**

Delphi (weatherproof) Connector and Mating Harness **#ETSA200RW-PA**

### Features

- > Compact siren has a small, remote amplifier to fit tight spaces for undercover vehicles or motorcycles
- > Class D Technology with high speed digital switching provides higher efficiency, less current draw and better reliability
- > Operates a single 100 watt speaker or dual 58 watt speakers
- > 5 popular warning tones (up to 3 tones can be activated): wail, yelp, piercer, hi-lo and super hi-lo, plus 4 additional air horn tones available
- > The microphone includes a pre-amp, 15' of power and signal cable, adjustable gain and a three-pin removable connector
- > Horn Ring (hands free operation) controls the tones and can be programmed to broadcast warning or air horn tones. When driver presses the vehicle's horn it will activate or de-activate the siren in programmed tone
- > Volume can be set for the public address (PA) and radio rebroadcast within the 200R amplifier; this feature can be pre-set to a desired level during installation
- > The Pre-Amp features an additional gain adjustment
- > Park/kill feature disables the siren when the vehicle is placed in park

### Technical Specifications

WATTS	100 Watts
INPUT VOLTAGE	10-30 Vdc
DIMENSIONS	5.4" (13.7 cm) L x 2.3" (5.8 cm) H x 4.6" (11.6 cm) D
CERTIFICATIONS	Meets or exceeds SAE J1849 and CA Title 13 sound levels when used with SoundOff Signal® speakers
WARRANTY	Two-year