



Australian & New Zealand Distributor

OzLED (Aust) Pty Ltd

218 Leitchs Rd

Brendale, QLD, 4500

Telephone (07) 3205 4355

Website: WWW.OZLED.COM.AU

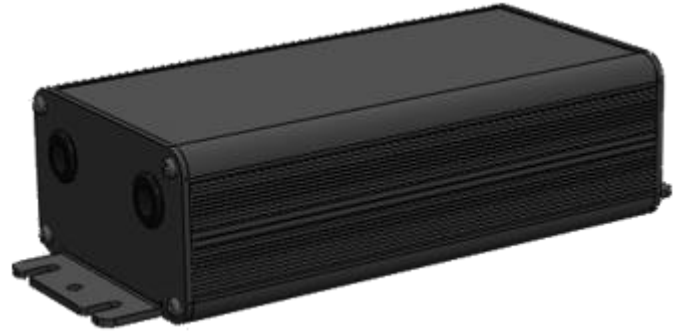
E-mail: sales@ozled.com.au

base6 OZST200V2 Siren Driver

Instruction Manual

The OZST200V2 has been designed to be a direct replacement for the OZST200, As such the wiring and connectors are identical and the unit may be substituted.

Technical Specifications	
Dimensions	Length 280mm Width 120mm Height 45mm
Input Voltage	9-32 VDC
Operating Temperature	- 30° to + 60°C
Input current	16 Amp @ 12.8V
Output Power	Two 100 watts RMS Max (11 Ohms speaker impedance)



Wiring Configuration		
Color	Function	Description
Red	Positive	Power Input + 9-32VDC
Black	Ground	Chassis Ground
Green	Warning Tone	Siren Activation + 9-32VDC
Blue	Air Horn Tone / Tone Change	Connect to Vehicle Horn + 9-32 VDC to activate 1. Less than 0.3 second for Next warning tone. 2. More than 0.3 second for Air Horn Tone.
Yellow x2	Speaker 1	Connect to the speaker 1. (100 watts speaker)
Brown x2	Speaker 2	Connect to the speaker 2. (100 watts speaker)

Warning Tones	
	Description
P1	Wail
P2	Yelp
P3	Yelp - Wail

Standards

AS NZS 6100.6.3	Electromagnetic compatibility (EMC) – Generic standards – Emission standard for residential, commercial and light industrial environments.
ISO 7637	Road Vehicles – Electrical disturbances from conduction and coupling.
J1455	Recommended Environmental Practices for Electronic Equipment Design in Heavy-Duty Vehicle applications

Trouble Shooting - Diagnostics

Condition	LED Output
Normal	Slow continuous flash (1.2s on – 1.2s off)
Low Supply Voltage	Fast continuous flash (0.2s on – 0.2s off)
Speaker open circuit	One, two or three short flashes (0.2s Flashes every 2s) One Flash – Speaker 1 Open Circuit Two Flashes – Speaker 2 Open Circuit Three Flashes – Both Speakers Open Circuit
Speaker short circuit	One, two or three short flashes (1.2s Flashes every 10s) One Flash – Speaker 1 Short Circuit Two Flashes – Speaker 2 Short Circuit Three Flashes – Both Speakers Short Circuit

Supply Low - is detected if the output is less than 90% of nominal, due to supply restriction.

Open Circuit - Faults do not affect operation – The offending output is driven regardless.

Short Circuit – Faults disable only the offending speaker output, the other speaker output functions normally – this may be cleared by cycling the power or warning tone input.

Faults detected during operation are latched and displayed on the LED until the power is cycled or the ON input rises.